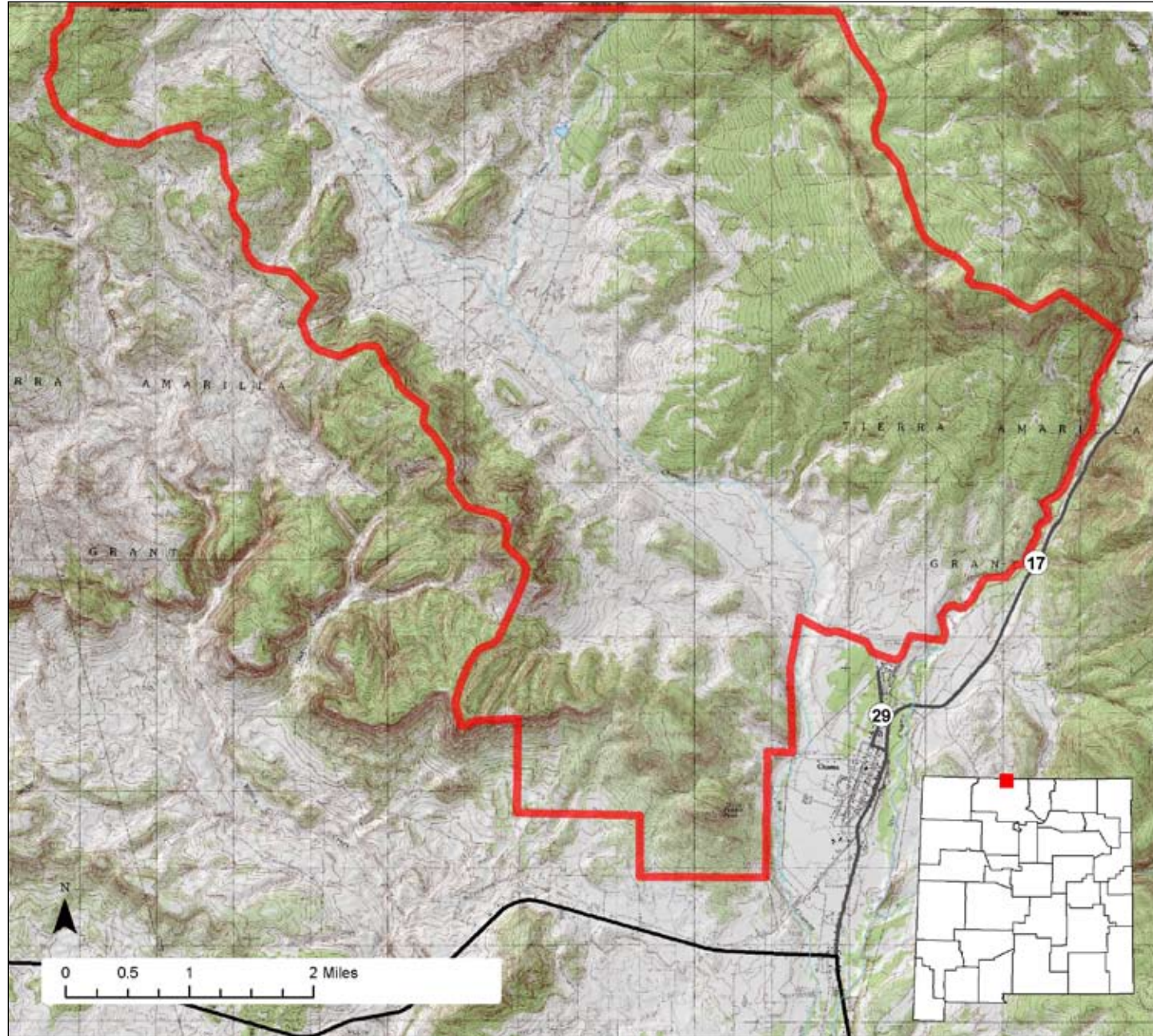




# Edward Sargent Wildlife Area



**Location:** The Sargent Wildlife Area can be found north of Chama in Rio Arriba County. The parking area is located at the north end of Pine Street, in the northwest corner of the village.

**Total Acreage:** 20,209 acres.

**Purchase:** The Sargent was purchased in 1975 with funding from The Nature Conservancy and the Federal Sportfish and Wildlife Restoration Act.

**Description:** The property provides habitat for elk and other wildlife species. It is one of the largest properties owned by the Department. Its northern boundary extends to the Colorado state line. The Sargent property consists of high aspen meadows, alder-lined streams, oak groves, and grassy meadows.

**For More information:** Regarding hunting, fishing and other activities, please see the appropriate Department publications and/or the Department's website: [www.wildlife.state.nm.us/](http://www.wildlife.state.nm.us/).

## Gain Activities

- ✓ Wildlife Viewing
- ✓ Photographing

## Access

- ✓ Hiking
- ✓ Bicycling
- ✓ Skiing/Snowshoeing
- ✓ Horseback Riding
- ✓ Camping

## Hunting and Fishing

- ✓ Hunting
- ✓ Fishing

## Closures

- ✓ Yes

## Facilities

- ✓ Rest rooms
- ✓ Primitive camping
- ✓ Interpretive exhibit
- ✓ No drinking water

## Fees

- ✓ Yes

## Motorized Vehicles

- ✓ Not allowed beyond the parking area

**For more information on hunting and fishing rules and seasons, please read current hunting or fishing Rules and Information Booklets available on the Department's website, at Department offices, or from license vendors state-wide.**

## What to See, Do, and Learn

**Wildlife Viewing**-Wildlife watchers may see elk, deer, and other wildlife. Good binoculars are important. The best time to view wildlife is at dawn or dusk. Restricted to designated areas May 15-June 30.

**Photographing**-The Sargent WMA is quite photogenic, with mountain, streams and forests. The best time to photograph wildlife is at dawn or dusk. A telephoto lens may be important.

**Hiking**-Hiking is the best way to see wildlife at the Sargent or other wildlife management areas. Restricted to designated areas May 15-June 30.

**Bicycling**-Bicycles can be helpful in accessing some of the upper reaches of trout streams and Nabor Lake. Bicycles must remain on established roads. Restricted to designated areas May 15-June 30.

**Skiing/Snowshoeing**-These are wonderful ways to see winter wildlife on the Sargent.

**Horseback Riding**-Horseback riding is a good way to see wildlife and can be an important tool when hunting big game. Restricted to designated areas May 15-June 30.

**Camping**-Camping is allowed only in a designated area and only from July 1-Nov. 15. Licensed hunters and their guests may camp in a designated area during their hunt.

**Hunting**-Hunting is available for elk, bear, turkey, and small game during authorized hunting seasons and with appropriate licenses and permits.

**Fishing**-Anglers may fish for trout in the Rio Chama, Rio Chamita, Nabor Creek, and Nabor Lake. Often a long hike is involved, but there are few anglers. A NM fishing license and Habitat Management and Access Validation is required. Restricted to designated areas May 15-June 30.

**Closures**-Access is restricted on the Sargent during elk calving May 15-June 30 and to non-hunters (except hunter's guests) during elk hunts.

**Facilities**-The Sargent has rest rooms, primitive camping, and interpretive exhibits.

**Interpretive Exhibit**-Since the Sargent is home to one of the state's largest elk herds, there is an interpretive exhibit on the life history of elk near the parking area. The interpretive exhibit and elk viewing deck is handicap accessible.

**Fees**-Hunters and fishermen must have appropriate licenses and permits. Wildlife viewers, photographers, hikers, bicyclists, horseback riders, and skiers must have a GAIN Permit and a Habitat Management and Access Validation.

**Motorized Vehicles**-Not allowed beyond the parking area.

